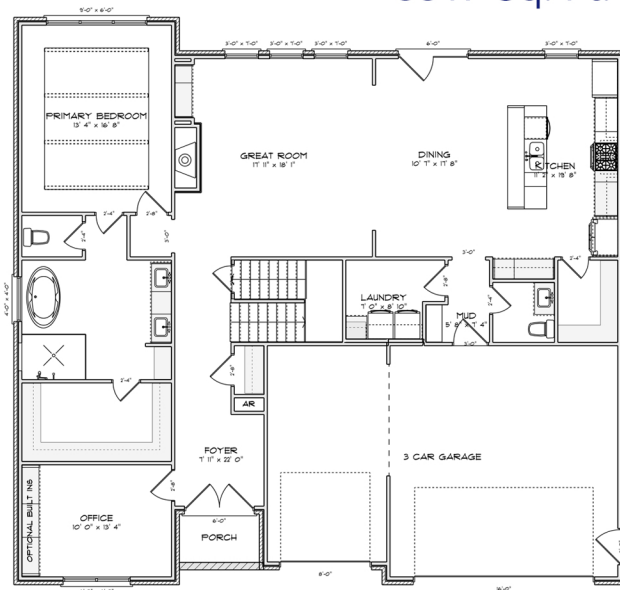




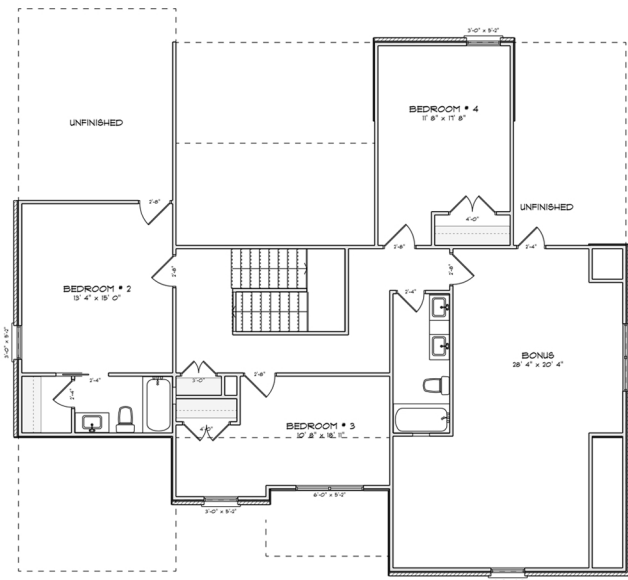
# LARKHALL



PRIMARY SUITE ON MAIN  
3317 Sq. Ft. • 4 Bed • 3.5 Bath



MAIN FLOOR



2ND FLOOR

- This easy-to-love open concept home, with a 3-car garage, highlights all the best parts of this style.
- The main living space encourages wine by the fire, board games at night, and grazing during football games.
- The generous kitchen has soft close premium cabinetry, quartz countertops, stainless steel appliances, and a large walk-in pantry.
- The main floor Primary Retreat is extremely spacious with a walk-in shower, free standing tub, large double vanity, and open shelving for additional storage.
- A drop zone welcomes you home from the three-car garage.
- 3 sizable bedrooms, 2 baths, and a bonus room are located upstairs
- A large unfinished area is the perfect spot for all those holiday decorations.
- A prime Hardin Valley location means quick access to countless restaurants, breweries, retail, parks, and recreation.



**Brian Shelby**  
Realtor®

10255 Kingston Pike • Knoxville, TN 37922  
(o) 865.693.3232 • (c) 865.414.5347  
bnshelby71@gmail.com  
License # 327468

